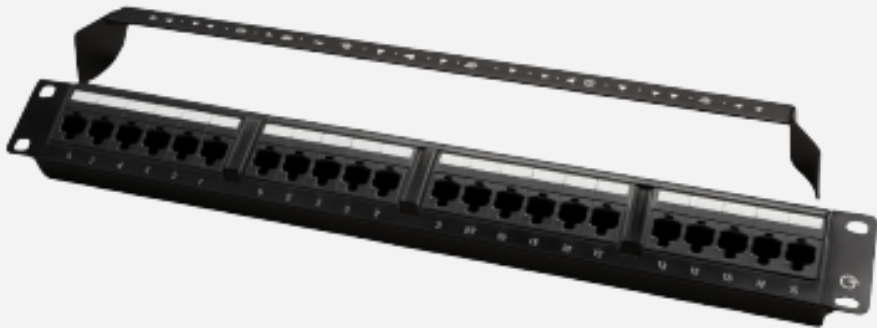


CL-U24P-C601

CL-U24P-C601 UTP Cat.6 Patch panel 24Port dual use IDC with back bar

- Earthing kit, cage nuts and mini cable ties included
- Individually number ports
- Load from 1 to 24 Keystone jacks in 1 U of rack space
- The rear cable management bar can be fitted without a tool

Category	Cat6
Cable Type	UTP
Port Number	24 Port
Size	1U



Detailed

Model	CL-U24P-C601
Termination	Snap-in
Type of Patch panel	Flat
Transmit capacity	250MHz
Ports	24
No. of Rack space	1U
Shielding	Unshielded
Punching Dependability	750 times
Width	19'
Design Service	OEM/ODM/Copperled Brand

[Daytech.Az](#)