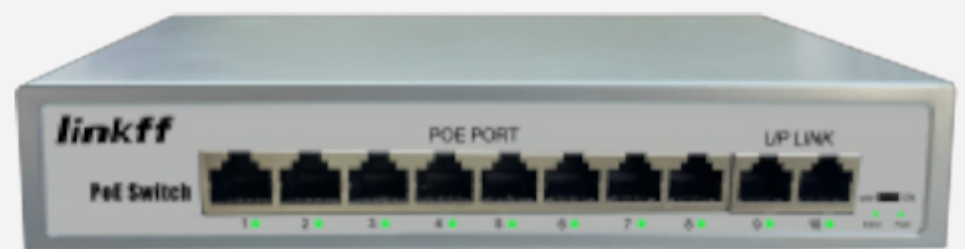


PoE Switch FF-P82G

FF-P82G PoE Switch 8POE+2GE

- 8*10/100mbps POE port,2*100/1000mbps UP Link port
- 250m Distance
- Support IEEE802.3AF/AT
- Whole Power:120W(52V 2.3A)
- All port supported by MDI/MDIX auto flip and self negotiation
- Supply 8 10/100Mbps adaptive high speed forwarding data packet non-lost port.
- Support IEEE802.3x flow control for Full-duplex mode and backpressure for Half-duplex mode.
- Each port max. power supply reached24W

Port Number	8 Port
Port speed	1000mbp/s
PoE	PoE
PoE power	120 W



Detailed

Product	8 Port POE Switch
Model	FF-P82G
POE Port	1 to 8 support IEEE802.3AF/AT Standard
Output Power	15.4W/24W IEEE802.3af/at
Power Pin	Both 1/2+□3/6- and 4/5+7/8-
Whole Power	≤120W (52V 2.3A)
POE Protocol	IEEE 802.3af/IEEE 802.3at
POE Type	End-span
Power Distance	≤150m
Network Standard	IEEE 802.3□ IEEE802.3u□802.3x□802.3af/at
Network Medium	10/100BASE-TX:5 class and above non shielded twisted pair

Data Distance	≤150m
Switch Capability	22Gbps
Forwarding Mode	Store and forward
Forwarding Rate	10BASE-T:14880PPS/port 100BASE-tx□14800pps/port
MAC Address	MAC address table 1K
Port Function	Power priority mechanism, fast and forward, MAC automatic learning and aging IEEE802.3X Full-duplex and mode and backpressure for Half-duplex mode
LED Indicator	Each port occupied 1 LINK/ACT.100Mbps, POE Status Indicator, Whole power indicator
Working Environment	Working temperature□-10°-- 55°C
Weight	1kg
Size	200×118×45(L*W*H)mm